



↑
Magnetic installation easy and firm
↓



Magnetic track light simplify your life

- Adopts Modules concept, allowing the magnetic track system adapt to any changes in the space;
- Tool free installation; positioned and re-positioned the magnetic modules conveniently;
- Choose from a variety of LED light modules to meet personalized solution;
- The number of light modules can be added or moved freely;
- Low voltage safe, no-touch hazard

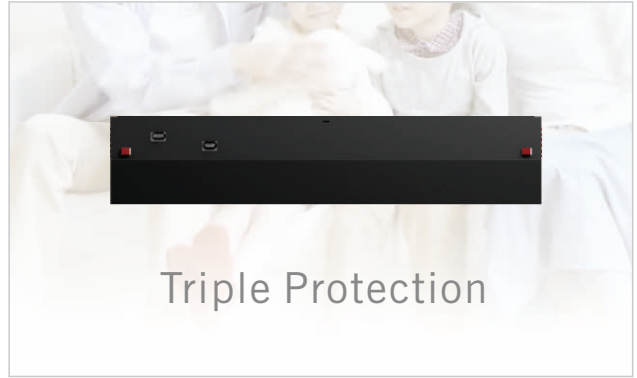
Secure Locking Support

Equipped with mechanical lock to make sure the modules are secured to the track. Press the two side buttons to unlock the modules.





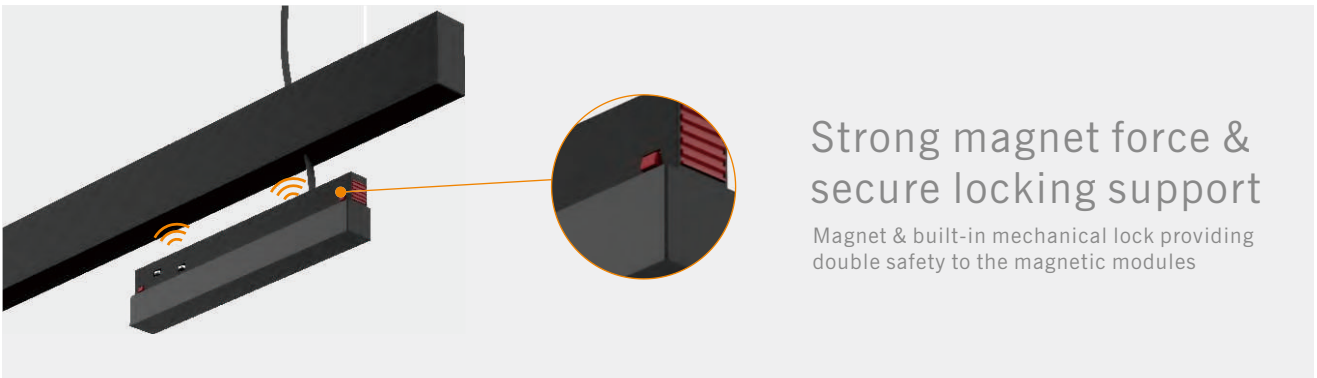
combined with the highest capacitance value and lowest ESR, make the magnetic driver have the characteristic of frequency stability and open-circuit failure mode, etc.



Short-circuit Protection

Over-load protection

over-voltage protection

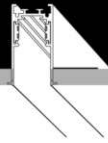




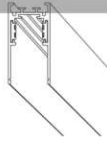
R35

MAGNETIC
TRACK LIGHT

Magnetic35



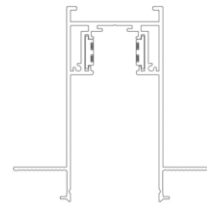
Recessed



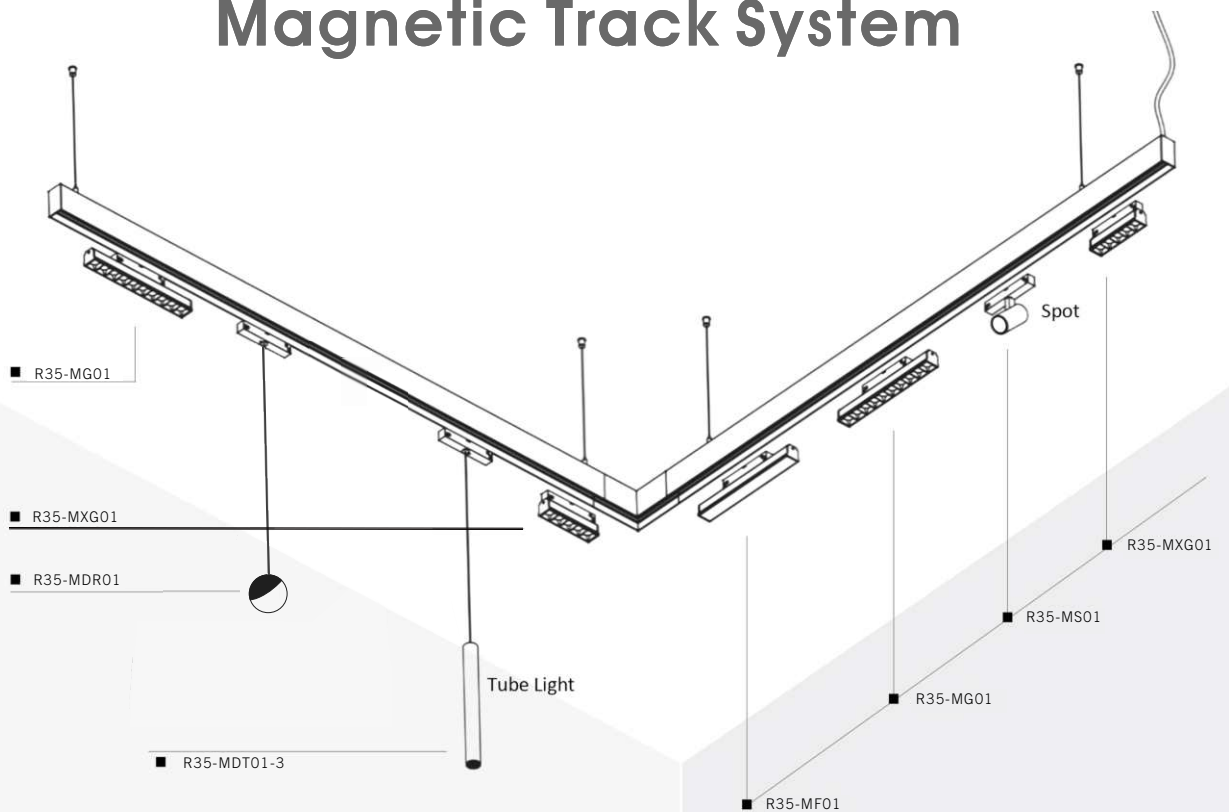
Surface



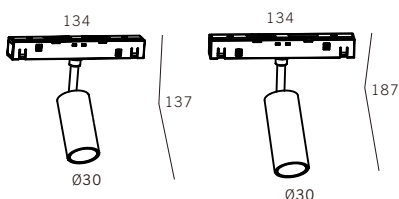
Suspended



48V Magnetic Track System

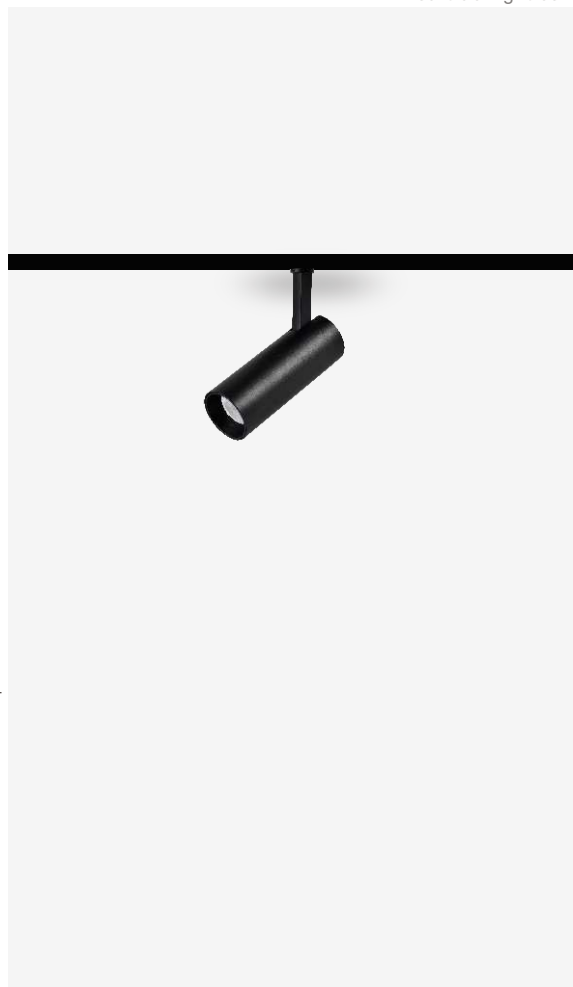
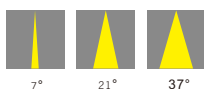


R35-MS01-3/5

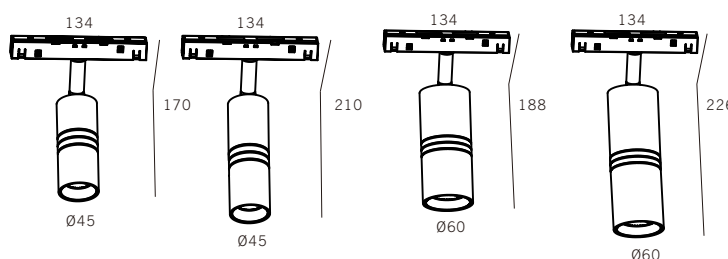


Product Code	Watt	CCT	>CRI	Voltage	LUMEN	Product Size	Finish	System Options
R35-MS01-3	3W	3/4/5000K	Ra90	48V	145lm	Ø30x137x134	■ BK	No Dim, Dali, 0-10V, Bluetooth, Zigbee
R35-MS01-5	5W	3/4/5000K	Ra90	48V	200lm	Ø30x187x134	□ WH	

Beam angle

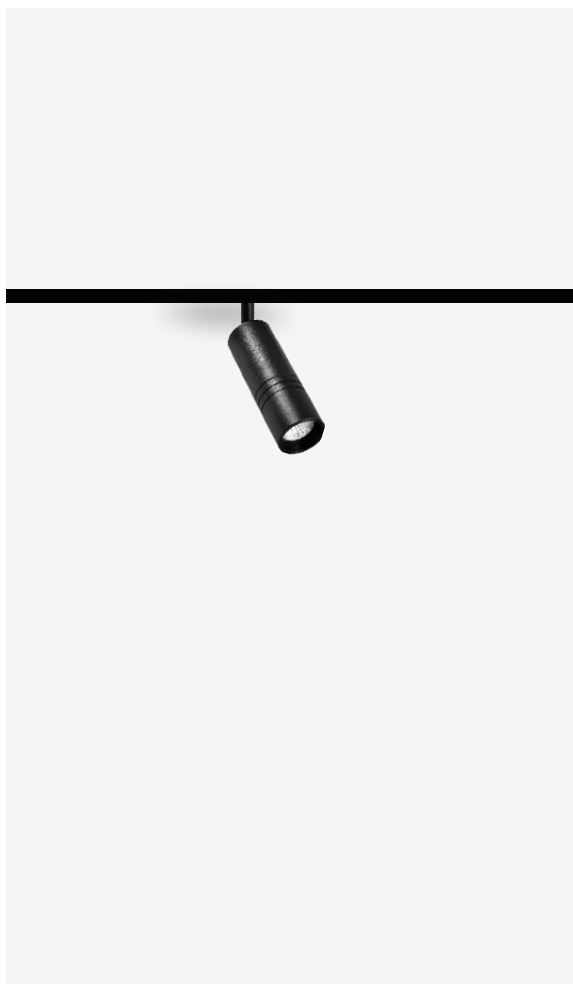
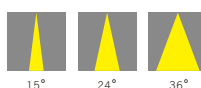


R35-MS02-7/12/16/20

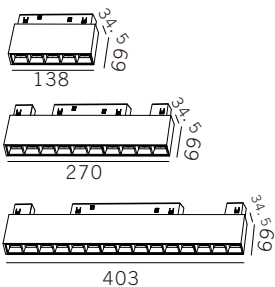


Product Code	Watt	CCT	>CRI	Voltage	LUMEN	Product Size	Finish	System Options
S35-MS02-7	7W	3/4/5000K	Ra90	48V	550lm	Ø45x170x134	■ BK	No Dim, Dali, 0-10V, Bluetooth, Zigbee
S35-MS02-12	12W	3/4/5000K	Ra90	48V	970lm	Ø45x210x134	□ WH	
S35-MS02-16	16W	3/4/5000K	Ra90	48V	1150lm	Ø60x188x134		
S35-MS02-20	20W	3/4/5000K	Ra90	48V	1450lm	Ø60x226x134		

Beam angle

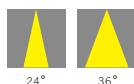


R35-MG01-10/20/30

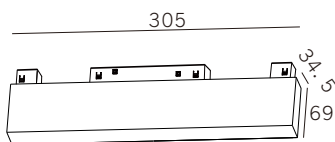


Product Code	Watt	CCT	>CRI	Voltage	LUMEN	Product Size	Finish	System Options
R35-MG01-10	10W	3/4/5000K	Ra90	48V	790lm	138x34. 5x69	■ BK	No Dim, Dali, 0-10V, Bluetooth, Zigbee
R35-MG01-20	20W	3/4/5000K	Ra90	48V	1550lm	270x34. 5x69	□ WH	
R35-MG01-30	30W	3/4/5000K	Ra90	48V	1950lm	403x34. 5x69		

Beam angle



R35-MF01-10/20/30/40

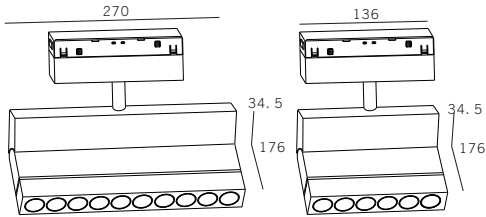


Product Code	Watt	CCT	>CRI	Voltage	LUMEN	Product Size	Finish	System Options
R35-MF01-10	10W	3/4/5000K	Ra90	48V	855lm	305x34. 5X69	■ BK	No Dim, Dali, 0-10V, Bluetooth, Zigbee
R35-MF01-20	20W	3/4/5000K	Ra90	48V	1845lm	605x34. 5X69	□ WH	
R35-MF01-30	30W	3/4/5000K	Ra90	48V	960lm	905x34. 5X69		
R35-MF01-40	40W	3/4/5000K	Ra90	48V	2310lm	1205x34. 5X69		

Beam angle

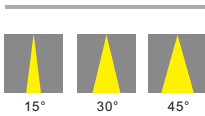


R35-MXG01-10/20



Product Code	Watt	CCT	>CRI	Voltage	LUMEN	Product Size	Finish	System Options
R35-MXG01-10	10W	3/4/5000K	Ra90	48V	690lm	136x34.5x176	■ BK	No Dim, Dali, 0-10V, Bluetooth, Zigbee
R35-MXG01-20	20W	3/4/5000K	Ra90	48V	1350lm	270x34.5x176	□ WH	

Beam angle



CONNENTION MODULE



Corner Connector



Straight Connector

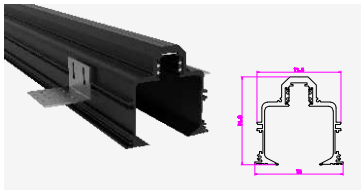


Straight Connector

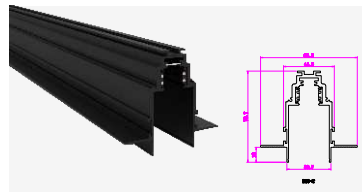


Live end

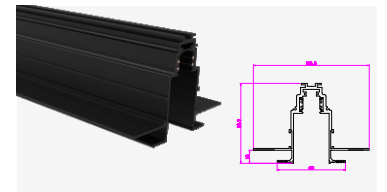
R35-Track Rail



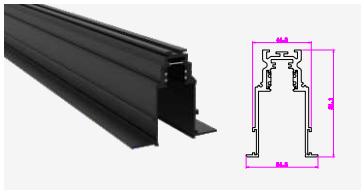
RH35-1



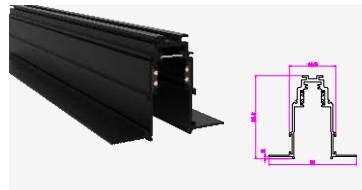
RH35-2



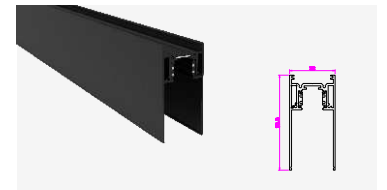
RH35-3



RH35-4



RH35-5



RU35-1

R35-Parts



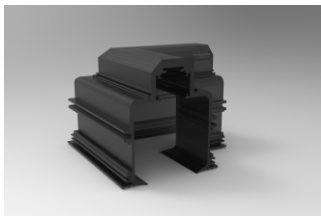
L bracket



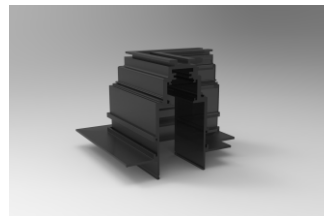
Suspension bracket



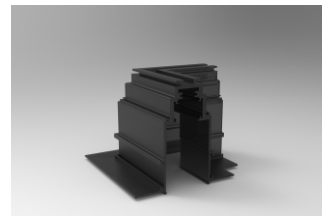
Bracket with spring



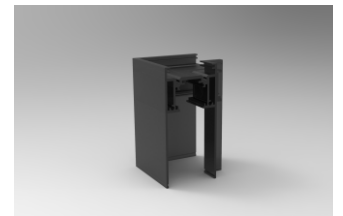
RH35-1
Corner joint



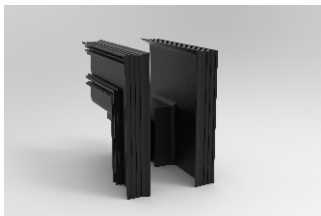
RH35-2
Corner joint



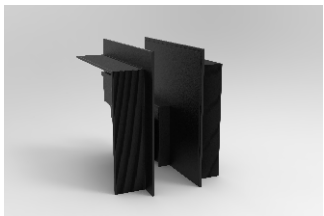
RH35-5
Corner joint



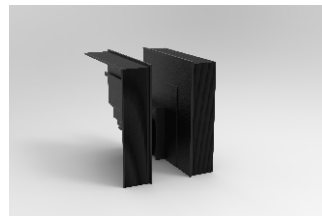
RU35-1
Corner joint



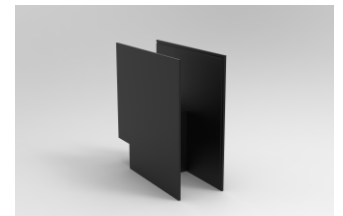
RH35-1
external vertical corner joint



RH35-2
external vertical corner joint



RH35-5
external vertical corner joint



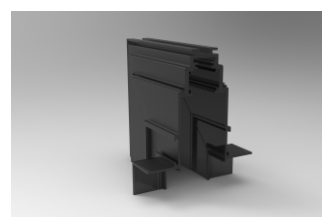
RU35-1
external vertical corner joint



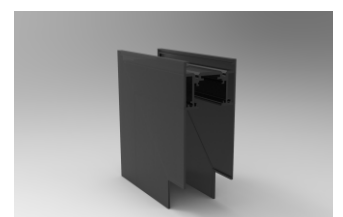
RH35-1
internal vertical corner joint



RH35-2
internal vertical corner joint



RH35-5
internal vertical corner joint



RU35-1
internal vertical corner joint