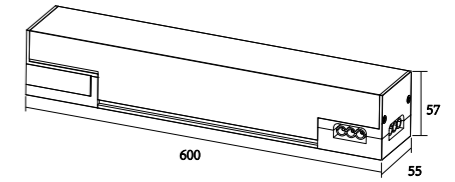


LED Linear Light XT2-A

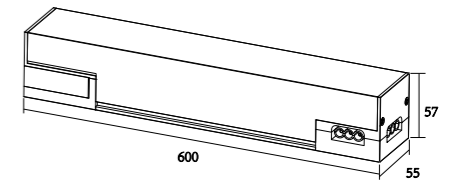


▶ COLOR Black White ▶ CCT 3000K 4000K 6500K



Model	Power	Size:(L*W*H:mm)	Lm/w	PF	Beam Angle	CRI	Material
XT2-A3-12	12W	300x55x57mm	90	0.9	120°	80	Aluminum+PC
XT2-A6-24	24W	600x55x57mm	90	0.9	120°	80	Aluminum+PC
XT2-A9-36	36W	900x55x57mm	90	0.9	120°	80	Aluminum+PC
XT2-A12-50	50W	1200x55x57mm	90	0.9	120°	80	Aluminum+PC
XT2-A15-60	60W	1500x55x57mm	90	0.9	120°	80	Aluminum+PC
XT2-A20-80	80W	2000x55x57mm	90	0.9	120°	80	Aluminum+PC

LED Linear Light XT2-B



▶ COLOR Black White ▶ CCT 3000K 4000K 6500K



Model	Power	Size:(L*W*H:mm)	Lm/w	PF	Beam Angle	CRI	Material
XT2-B3-12	12W	300x55x57mm	80	0.9	100°	80	Aluminum+PC
XT2-B6-24	24W	600x55x57mm	80	0.9	100°	80	Aluminum+PC
XT2-B9-36	36W	900x55x57mm	80	0.9	100°	80	Aluminum+PC
XT2-B12-50	50W	1200x55x57mm	80	0.9	100°	80	Aluminum+PC
XT2-B15-60	60W	1500x55x57mm	80	0.9	100°	80	Aluminum+PC
XT2-B20-80	80W	2000x55x57mm	80	0.9	100°	80	Aluminum+PC

Universal Splicing Series

- Only one power wire can connect 1000W
- Quick splicing and versatile styling
- Unique design with a rotatable connector
- Exclusive private model for the entire series, certified by TUV

LED Linear Light XT2-C



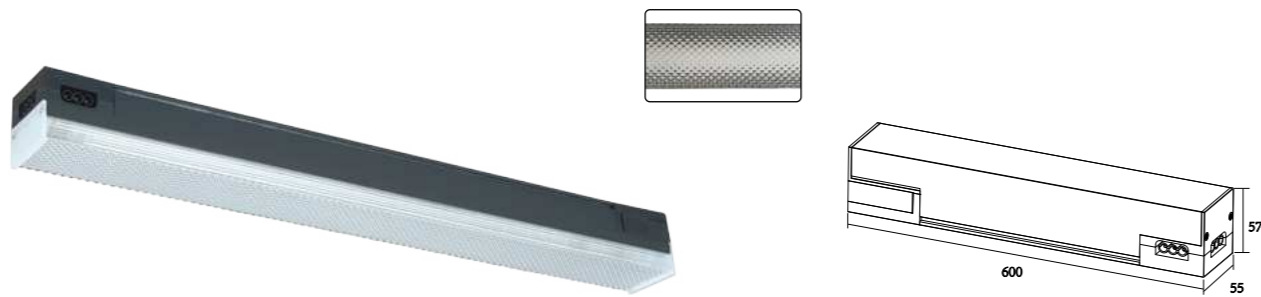
► COLOR Black White ► CCT 3000K 4000K 6500K



Model	Power	Size:(L*W*H:mm)	Lm/w	PF	Beam Angle	CRI	Material
XT2-C3-12	12W	300x55x57mm	100	0.9	80°	80	Aluminum+PC
XT2-C6-24	24W	600x55x57mm	100	0.9	80°	80	Aluminum+PC
XT2-C9-36	36W	900x55x57mm	100	0.9	80°	80	Aluminum+PC
XT2-C12-50	50W	1200x55x57mm	100	0.9	80°	80	Aluminum+PC
XT2-C15-60	60W	1500x55x57mm	100	0.9	80°	80	Aluminum+PC
XT2-C20-80	80W	2000x55x57mm	100	0.9	80°	80	Aluminum+PC



LED Linear Light XT2-D



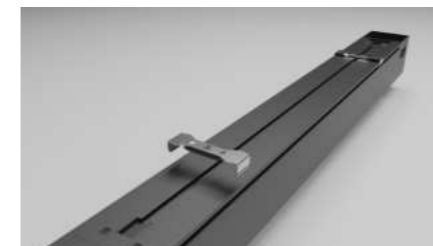
► COLOR Black White ► CCT 3000K 4000K 6500K



Model	Power	Size:(L*W*H:mm)	Lm/w	PF	Beam Angle	CRI	Material
XT2-D3-12	12W	300x55x57mm	100	0.9	80°	80	Aluminum+PC
XT2-D6-24	24W	600x55x57mm	100	0.9	80°	80	Aluminum+PC
XT2-D9-36	36W	900x55x57mm	100	0.9	80°	80	Aluminum+PC
XT2-D12-50	50W	1200x55x57mm	100	0.9	80°	80	Aluminum+PC
XT2-D15-60	60W	1500x55x57mm	100	0.9	80°	80	Aluminum+PC
XT2-D20-80	80W	2000x55x57mm	100	0.9	80°	80	Aluminum+PC



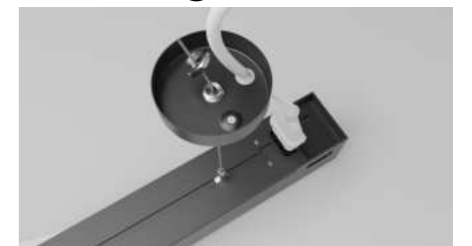
Surface Mounted



Recessed

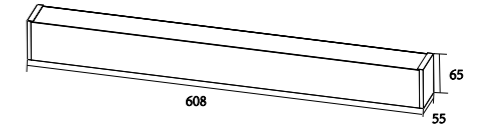


Hoisting





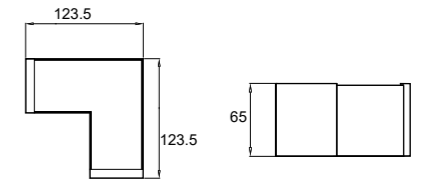
LED Linear Light XT3-B



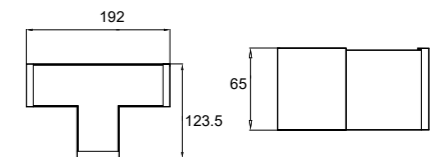
► COLOR Black White ► CCT 3000K 4000K 6500K



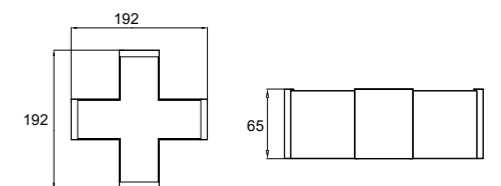
Model	Power	Size:(L*W*H:mm)	Lm/w	PF	Beam Angle	CRI	Material
XT3-B3-12	12W	308x55x65mm	80	0.9	100°	80	Aluminum+PC
XT3-B6-24	24W	608x55x65mm	80	0.9	100°	80	Aluminum+PC
XT3-B9-36	36W	908x55x65mm	80	0.9	100°	80	Aluminum+PC
XT3-B12-50	50W	1208x55x65mm	80	0.9	100°	80	Aluminum+PC
XT3-B15-60	60W	1508x55x65mm	80	0.9	100°	80	Aluminum+PC
XT3-B20-80	80W	2008x55x65mm	80	0.9	100°	80	Aluminum+PC



Model	Power	Size:(L*W*H:mm)	Lm/w	PF	Beam Angle	CRI	Material
XT3-B-L	8W	123.5x123.5x65mm	80	0.9	100°	80	Aluminum+PC



Model	Power	Size:(L*W*H:mm)	Lm/w	PF	Beam Angle	CRI	Material
XT3-B-T	10W	192x123.5x65mm	80	0.9	100°	80	Aluminum+PC



Model	Power	Size:(L*W*H:mm)	Lm/w	PF	Beam Angle	CRI	Material
XT3-B-X	12W	192x192x65mm	80	0.9	100°	80	Aluminum+PC

Seamless Splicing Series

- Only one power wire can connect 1000W
- Seamless splicing, versatile design
- Uniform lighting effect, high light efficiency
- Exclusive private model for the entire series, certified by TUV