



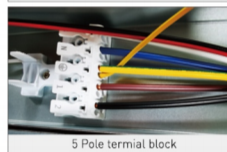
Horizontal wiring



Openable



IK10



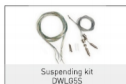
5 Pole terminal block

B
Silver

LED Arena Linear Light

- Arena Linear light could be used as the industry and warehouse linear light;
- IK10 and lower UGR function makes the linear light ideal for Sport and GYM hall;
- As high as 150lm/W;
- 52-82W selected with different lumen output;
- Arena could be surface mount installed or suspended;
- 5x2.5MM2 through wiring and openable housing makes it simply linkable by Horizontal wiring;
- The housing is aluminium + Metal base. Excellent heat dissipation;
- 100,000hrs life time;
- AOT high efficiency 3030 LEDs;
- Osram/Cupower driver;

Accessories



Suspending kit
DWL655



Specification

Arena Industry Linear

Name	ModelNo.	Size	Efficiency	Wattage	Luminous flux	UGR	Beam Angle	CCT
52-82W Arena Industry Linear	DWL6582	Φ1545*82*50mm	150lm/W	52/82W Selected	7800lm/8700lm/11250lm/12300lm Selected	22/27	90°	3000K/4000K/5000K
	DWL6582-DA	Φ1545*82*50mm	150lm/W	52/82W Selected	7800lm/8700lm/11250lm/12300lm Selected	22/27	90°	3000K/4000K/5000K
100W Arena Industry Linear	DWL65100	Φ1545*82*50mm	140lm/W	100W	14000lm	22/27	90°	3000K/4000K/5000K
	DWL65100DA	Φ1545*82*50mm	140lm/W	100W	14000lm	22/27	90°	3000K/4000K/5000K

Arena Spot Linear

Name	ModelNo.	Size	Efficiency	Wattage	Luminous flux	UGR	Beam Angle	CCT
52-82W Arena Spot Linear	DWL6582U	Φ1545*82*50mm	130lm/W	52/82W Selected	6760lm/7540lm/9750lm/10649lm Selected	19	60°	3000K/4000K/5000K
	DWL6582U-DA	Φ1545*82*50mm	130lm/W	52/82W Selected	6760lm/7540lm/9750lm/10649lm Selected	19	60°	3000K/4000K/5000K
100W Arena Spot Linear	DWL65100U	Φ1545*82*50mm	120lm/W	100W	12000lm	19	60°	3000K/4000K/5000K
	DWL65100UDA	Φ1545*82*50mm	120lm/W	100W	12000lm	19	60°	3000K/4000K/5000K

Suspending kit DWL655 3M suspending cable+3M transparent 3x0.75mm2 transparent cable

* DA= DALI



Trunk
140lm/W,
160lm/W



Pro Trunk Lens Version (New Installation)

- Easy and quick continous installation without any tools by the clips integrated inside;
- 140LM/W and 160LM/W high efficiency;
- Free selection beam angle from Sharp 30°60°90° to flood 120°and from asymmetric 25°to double asymmetric 25°;
- 1-10V dimming, Dali control optional;
- X,L,T shape Node connector available;
- White coated aluminum housing and silver color optional;
- Different length of module and rail is available;
- Sensor functional optional;

Accessories



X Connector



L Connector



T Connector



End cap



Suspending / Surface mount Kit



Bland Cover



Specification

Name	ModelNo.	Size	Efficiency	Wattage	Luminous flux	Beam Angle	CCT
Pro Trunk Lens Version	DWT535X	1436x70x72mm	140lm/W	35W	4900lm	25°/30°/60°/90°	
	DWT560X	1436x70x72mm	140lm/W	55W	7700lm	25°/30°/60°/90°	
	DWT570X	1436x70x72mm	140lm/W	70W	9800lm	25°/30°/60°/90°	3000K/ 4000K/ 5700K
	DWT535XB	1436x70x72mm	160lm/W	35W	5600lm	25°/30°/60°/90°	
	DWT560XB	1436x70x72mm	160lm/W	55W	8800lm	25°/30°/60°/90°	
	DWT570XB	1436x70x72mm	160lm/W	70W	11200lm	25°/30°/60°/90°	

*X=3/5/7, it means 3 wires, 5wires, 7 wires, 9 wires



Trunk
Frosted cover



110°



W
White

Pro Trunk Frosted Cover (New Installation)

- Easy and quick continous installation without any toots by the clips integrated inside;
- 120lm/W , 145lm/W;
- Frosted LED module cover;
- 1-10V dimming, Dali control optional;
- X,L,T shape Node connector available;
- White coated aluminum housing and silver color optional;
- Different length of module and rail is available;
- Sensor functional optional;

Accessories



X Connector



L Connector



T Connector



End cap



Suspending / Surface mount Kit



Bland Cover



Specification

Name	ModelNo.	Size	Efficiency	Wattage	Luminous flux	Beam Angle	CCT
Pro Trunk Frosted Cover	DWTF535X	143x70x76mm	120m/W	35W	4200lm	110°	
	DWTF540X	143x70x76mm	120m/W	55W	6600lm	110°	
	DWTF570X	143x70x76mm	120m/W	70W	8400lm	110°	3000K/ 4000K/ 5700K
	DWTF535XB	143x70x76mm	145lm/W	35W	5100lm	110°	
	DWTF540XB	143x70x76mm	145lm/W	55W	8000lm	110°	
	DWTF570XB	143x70x76mm	145lm/W	70W	10000lm	110°	

*X=3/5/7, it means 3 wires, 5wires, 7 wires, 9 wires





W
White

Retrofit Trunk Lens Version

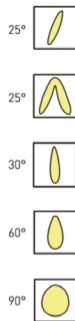
- It is ideal retrofit for the existing T-8 or T5 without any changes of the wiring inside and any tools by the clips integrated inside;
- 140lm/W, 160lm/W. free selection beam angle from Sharp 30°60°90° to flood 120° and from asymmetric 25° to double asymmetric 25°;
- 1-10V dimming, DALI control optional;
- X,L,T shape Node connector available;
- White coated aluminum housing and silver color optional;
- It could be used in shops, supermarket, office ect;
- Sensor functional optional;
- Compatible with famous brand:



Specification

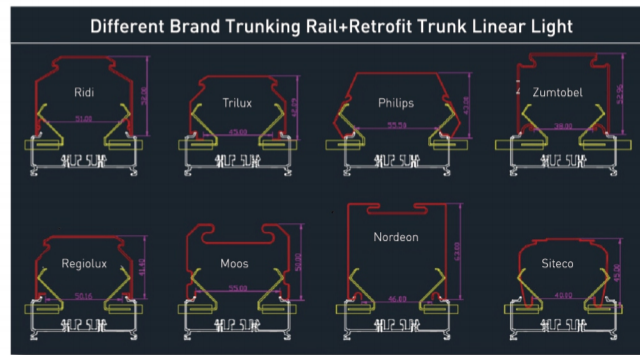
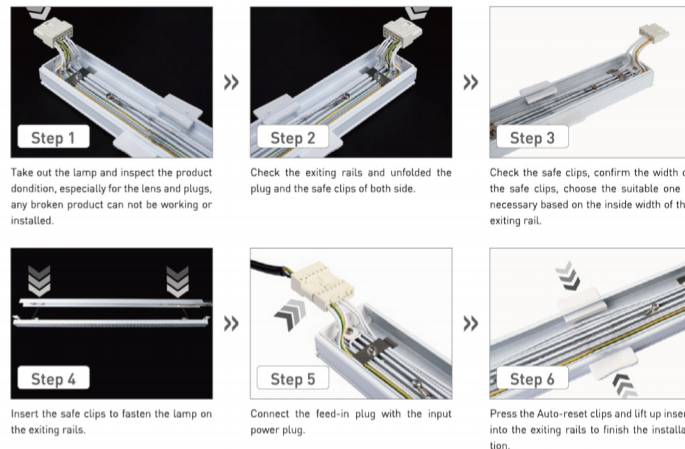
Name	Model.No.	Size	Efficiency	Wattage	Luminous flux	Beam Angle	CCT
Retrofit Trunk Lens Version	DWT535RX	143x70x33mm	140lm/W	35W	4900lm	25°/30°/60°/90°	3000K/ 4000K/ 5700K
	DWT560RX	143x70x33mm	140lm/W	55W	7700lm	25°/30°/60°/90°	
	DWT570RX	143x70x33mm	140lm/W	70W	9800lm	25°/30°/60°/90°	
	DWT535RXB	143x70x33mm	160lm/W	35W	5600lm	25°/30°/60°/90°	
	DWT560RXB	143x70x33mm	160lm/W	55W	8800lm	25°/30°/60°/90°	
	DWT570RXB	143x70x33mm	160lm/W	70W	11200lm	25°/30°/60°/90°	

*X=3/5/7, it means 3 wires, 5wires, 7 wires, 9 wires



Retrofit trunk installation manual

***Warning: Make sure the power is off before installation.**



Retrofit
120lm/W



W
White

Retrofit Trunk Frosted Cover

- It is ideal retrofit for the existing T-8 or T5 without any changes of the wiring inside and any tools by the clips integrated inside;
- 120lm/W, 145lm/W, frosted LED module cover;
- 1-10V dimming, Dali control optional;
- X,L,T shape Node connector available;
- White coated aluminum housing and silver color optional
- It could be used in shops, supermarket, office and ect;
- Sensor functional optional;
- Compatible with famous brand:



Accessories



X Connector

L Connector

T Connector

End cap

Suspending / Surface mount Kit

Bland Cover

Rail



Specification

Name	ModelNo.	Size	Efficiency	Wattage	Luminous flux	Beam Angle	CCT
Retrofit Trunk Frosted Cover	DWTF535RX	143x670x37mm	120lm/W	35W	4200lm	110°	
	DWTF560RX	143x670x37mm	120lm/W	55W	6600lm	110°	
	DWTF570RX	143x670x37mm	120lm/W	70W	8400lm	110°	3000K/ 4000K/ 5700K
	DWTF535RXB	143x670x37mm	145lm/W	35W	5100lm	110°	
	DWTF560RXB	143x670x37mm	145lm/W	55W	8000lm	110°	
	DWTF570RXB	143x670x37mm	145lm/W	70W	10000lm	110°	

*X=3/5/7, it means 3 wires, 5wires, 7 wires, 9 wires

